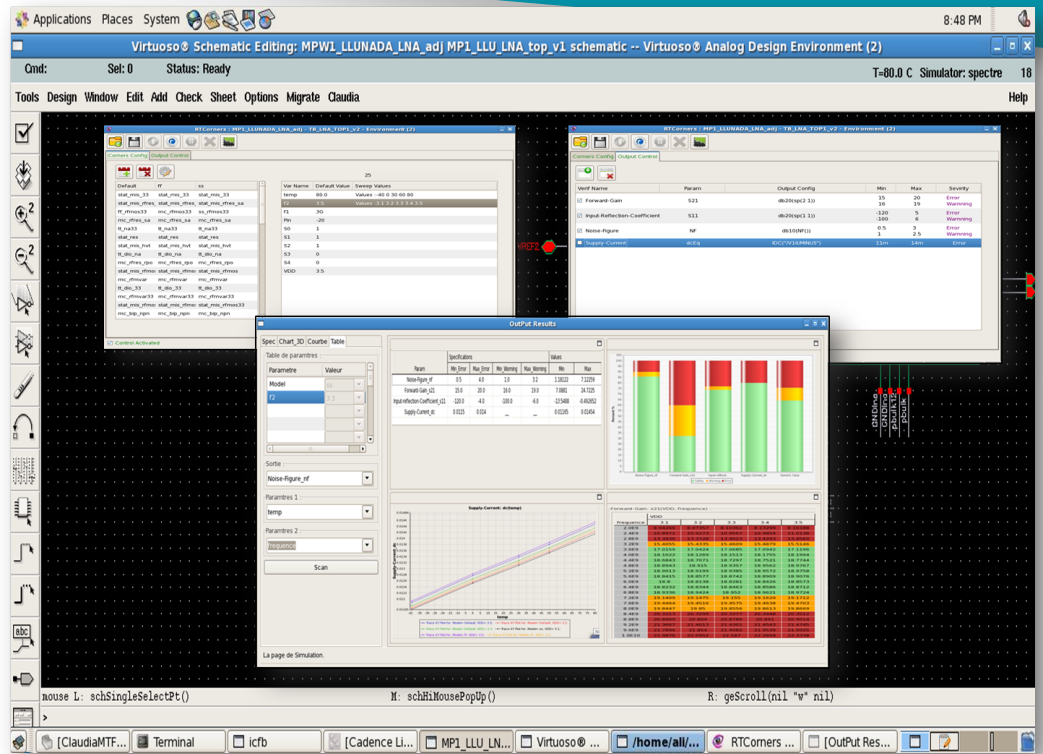
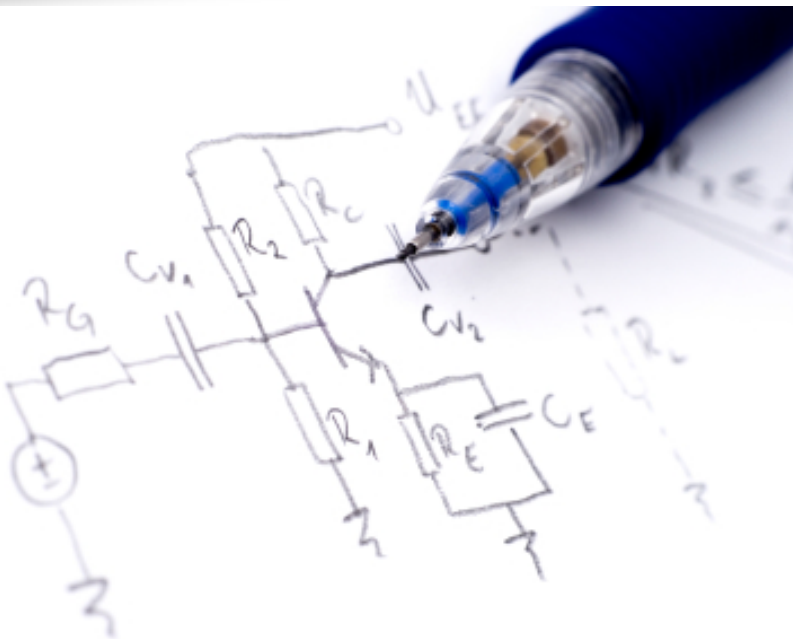


# CLAUDIA

Claudia is a powerful productivity software for RF and analog design teams sitting on top of the traditional EDA tools layer that accelerates the design cycle and increases the industrial quality of your circuits.



## A virtual design



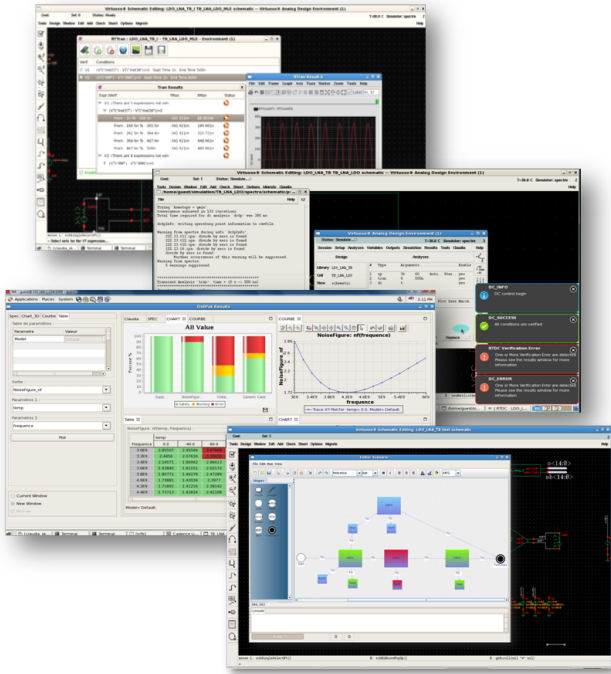
With RF and Analog circuits getting increasingly complex, faster schedule demands, more and more sensitive process nodes, designers need serious help to build more transistors, better, and faster. Along with designing under the pressure of time, the risk of missing something is high. So what should you do ?



# ClaudiaMTFD

More Time For Design

Have a  
high level  
view  
of where your  
block stands.



The Analog/RF design cycle is not deterministic. The sensitivity and interactivity of electrical variables make it hard to converge while keeping an eye on all conditions that need to be met. It is key to always remember which simulation to run next on top of which parameter to modify and be in sync with your design team.

## Release early, Review often

to make sure you have not forgotten anything, that the block that you are designing fits with the top level design. Understand when you are really ready to sign off blocks and the circuit.

## Focus on the design of the system

Spend your time designing the right architecture, circuitry, handcraft the particular topology to obtain the right performance and robustness. Manage the process that ensures a good industrial quality grade

## Why should you hire Claudia today ?

- To attain higher performance and design more differentiated features as designers can focus more on their architecture rather than on execution.
- To reduce machine and simulation costs and optimize the verification overall time
- To improve the quality of communication in the team as designers can easily adhere to a common methodology (minimum set of simulations, inter block constraints, type of results needed) and share at all time with the rest of the team.
- To reduce risks of re-designs with 24/7 status at a glance, formal review process automatic consistency checks and complete view of design history.

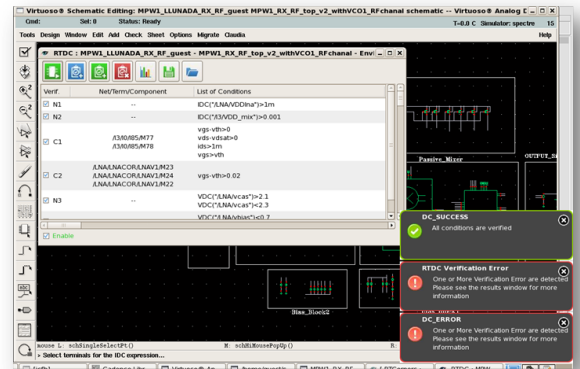
Focus on the design of the system

# Self-documented design

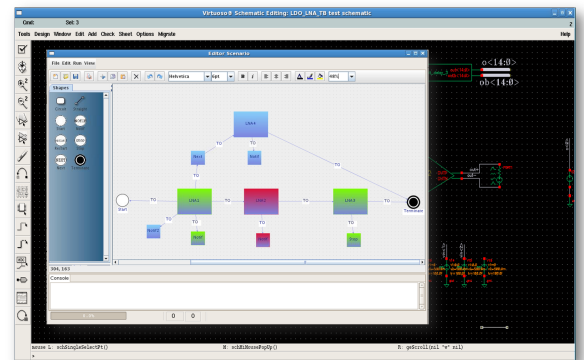
## Who is Claudia ?

Claudia was designed by analog/RF designers for analog/RF designers. She comes along with:

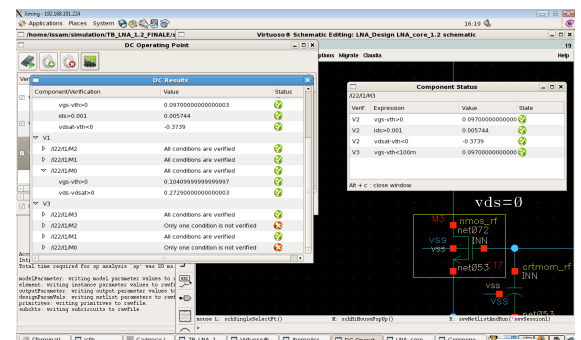
**Aladdin**, a virtual verification agent that helps you to manage a good test plan and environment depending on all the variables and the conditions. Evaluates the time of simulation needed and avoid costly mistakes such as saturation and breakdown voltage. It helps you to cover all the specifications thanks to the dedicated simulation.



**Lighthouse**, a smart real-time-controller that launches and constantly monitors all the required simulations. Because Claudia understands your intents and the design conditions, she can decide early-on to stop simulations that do not converge and automatically move on to the next relevant job. Claudia notifies you upon final completion even when you are away from your desk. It is possible to detect the errors, warnings and special key-words in the Log files to warn the designer.



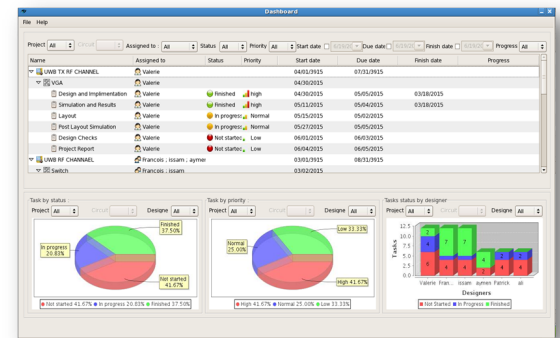
**Sherlock**, an interactive environment to debug and fine-tune your schematics. Claudia understands where errors happen, display curves and values, and pinpoints the error in the Schematic so you can fine-tune the design.



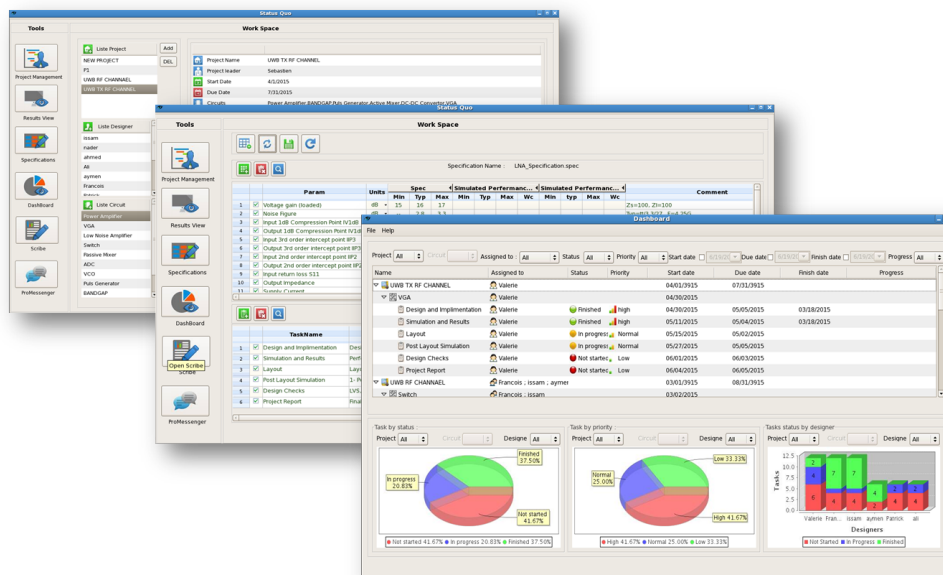
**Scribe**, your personal documentalist that reports in an easy-to-read way the latest status of all your block simulations (PVT, Monte Carlo, with expandable views of all your results (gains, loss, noise...) the final documentation of your circuit (block pin-out, values, variable Specifications, revision history of the design, Results simulations history, coverage, final datasheet...)



**Status Quo**, your 24/7 assistant that reports the state of the overall project and estimated completion schedule based on the current coverage and simulation still needed.



# Project Scheduling and Organization



## Technical features

- Works independently on top of EDA tools through its own secured optimized database
- Easy simulation plan and real time control of simulations (DC, operating point, Transient, Break down junction, PVT Corners, ...)
- Real time monitoring and smart self-interrupt of simulations, notification of Completion
- Advanced Log file analysis
- Restart simulation at previous stop point

- Dynamic dashboard of multi-variable sweep simulation results and errors
- Interactive Schematic feedback to display nets and components to debug
- Project automatic update with estimation of number/ duration of simulations to be completed
- Design Coverage estimation
- Automatic generation of datasheet and design documentation.



# ClaudiaMTFD

More Time For Design

Contact us today for a demo and a quote: [info@bebcom.com](mailto:info@bebcom.com)